

BLACKOUT

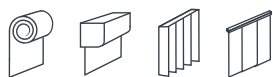


M1 - Class 1

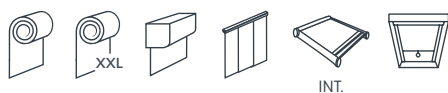
OSCAR IGNIS BLACKOUT MATTE BO



OSCAR IGNIS BLACKOUT



MATTE BO



BANDALUX

OSCAR IGNIS BLACKOUT

100% OPACIDAD SIN PVC

- Composición sin PVC y con aspecto textil.
- Presenta el mismo color por ambas caras.
- Apto para ambientes salinos (IMO).
- Bloqueo del 100% de los rayos UV.
- Opacidad total que garantiza máxima privacidad.
- Eficaz protección térmica que reduce el consumo energético del edificio.
- Instalación interior. Ideal para salas de proyección y habitaciones de hotel u hospital que requieran opacidad total.

100% DARKNESS WITH NO PVC

- PVC-free composition, with a textile appearance.
- Presents the same color on both sides.
- Ideal for salty environments (IMO certified).
- Blocks 100% of the UV rays.
- Total darkness, guarantees maximum privacy.
- Effective thermal protection, making for greater energy savings in the building.
- Indoor installation. Ideal for screening rooms and hotel and hospital rooms that require total darkness.

100 % OPAQUE SANS PVC

- Composition sans PVC et aspect tissu.
- Même coloris sur les deux faces.
- S'adapte aux atmosphères salines (IMO).
- Rayons UV bloqués à 100 %.
- Opacité totale garantissant une parfaite intimité.
- Isolation thermique performante qui réduit la consommation d'énergie du bâtiment.
- Pose intérieure. Idéal pour les salles de projection et chambres d'hôtel ou d'hôpital nécessitant une occultation totale.

100% DI OPACITÀ SENZA PVC

- Composizione senza PVC e con aspetto tessile.
- Presenta lo stesso colore su entrambi i lati.
- Adeguato per ambienti salini (IMO).
- Blocco del 100% dei raggi UV.
- Opacità totale che garantisce massima privacy.
- Efficace protezione termica che riduce il consumo energetico dell'edificio.
- Installazione esterna. ideale per sale di proiezione e camere di hotel o di ospedale che richiedono un'opacità totale.

PROPERTIES

Contributing to
Ecofriendly Building



BLACK
OUT

PVC
FREE



LEAD
FREE

BREEAM*

FABRICS CERTIFICATES



3 YEAR
WARRANTY

OEKO-TEX®
CONFIDENCE IN TEXTILES
STANDARD 100
2005ANSS84 AITEX
FIBRE 401 FIBRE 402
www.oeko-tex.com/100

REACH
COMPLIANT



RECYCLABLE

MAINTENANCE



MATTE BO

100% OPACIDAD

- Material fabricado con 75% PVC y 25% fibra de vidrio, apto para prácticamente cualquier sistema.
- Bloqueo del 100% de los rayos UV.
- Opacidad total que garantiza máxima privacidad.
- Eficaz protección térmica que reduce el consumo energético del edificio.
- Ideal para instalación interior en salas de proyección y habitaciones de hotel u hospital que requieran oscurecimiento total.

100% DARKNESS

- A material made with 75% PVC and 25% fiberglass, suitable for just about any system.
- Blocks 100% of the UV rays.
- Total darkness, guarantees maximum privacy.
- Effective thermal protection, making for greater energy savings in the building.
- Ideal for indoor installation in screening rooms and hotel and hospital rooms that require total darkness.

100 % OPAQUE

- Le matériau composé à 75 % de PVC et 25 % de fibre de verre s'adapte à presque tous les systèmes.
- Rayons UV bloqués à 100 %.
- Opacité totale garantissant une parfaite intimité.
- Isolation thermique performante qui réduit la consommation d'énergie du bâtiment.
- Idéal pour une pose dans des salles de projection et des chambres d'hôtel ou d'hôpital nécessitant une occultation totale.

100% OPACITÀ

- Materiale fabbricato con 75% di PVC e 25% di fibra di vetro, adeguato per praticamente qualsiasi sistema.
- Blocco del 100% dei raggi UV.
- Opacità totale che garantisce massima privacy.
- Efficace protezione termica che riduce il consumo energetico dell'edificio.
- Ideale per installazione interna in sale di proiezione e camere di hotel o di ospedale che richiedono un'oscuramento totale.

PROPERTIES



BLACK
OUT

FABRICS CERTIFICATES



3 YEAR
WARRANTY

MAINTENANCE



COMPANY & SYSTEMS CERTIFICATES



ISO 9001 50001
14001 45001

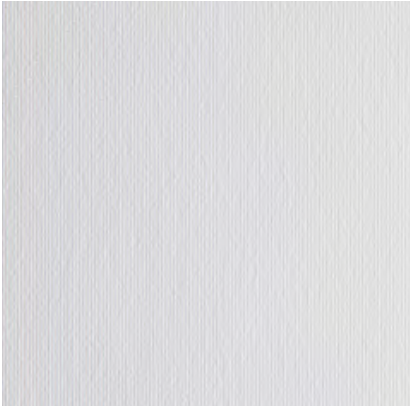


EMAS

3 YEAR
WARRANTY



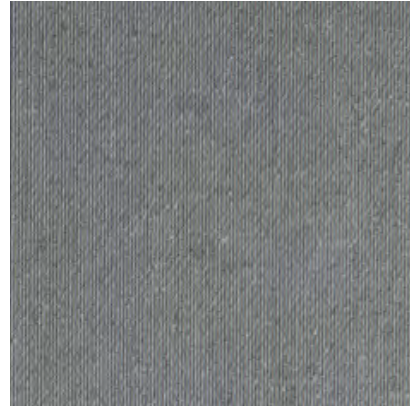
FIND MORE AT — contract.bandalux.com



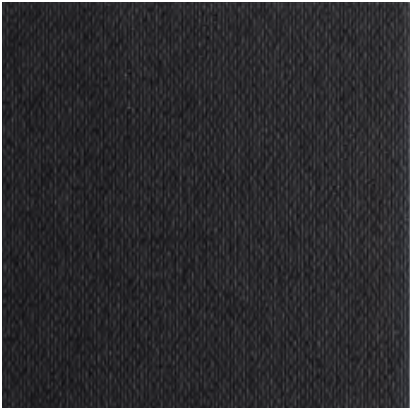
White
Ref. 67000



Grey
Ref. 67003



Dark Grey
Ref. 67004



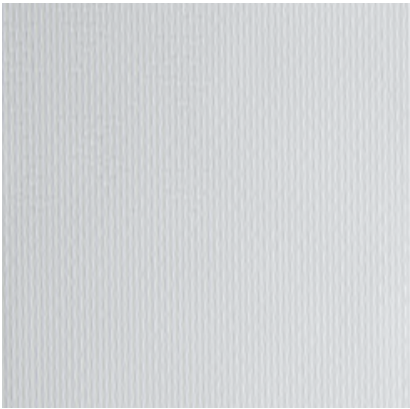
Black
Ref. 67005



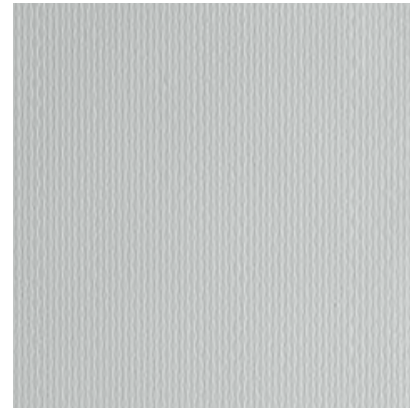
Ivory
Ref. 67001



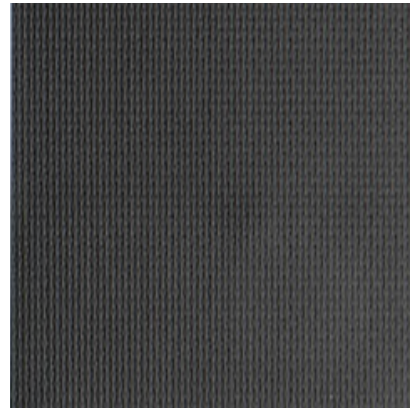
Stone
Ref. 67002



White
Ref. 40003F



Light Grey
Ref. 40004F



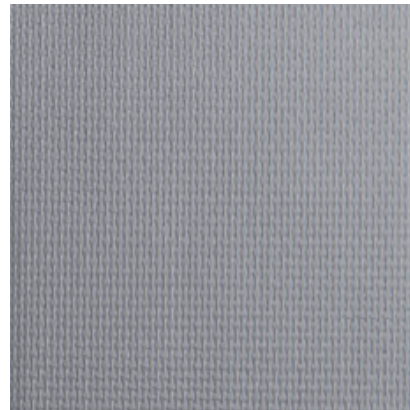
Black
Ref. 40006F



Alabaster
Ref. 40007F



Custard
Ref. 40001F



Dark Grey
Ref. 40005F



TECHNICAL DATA

OSCAR IGNIS BLACKOUT

MATTE BO

Composición / Composition Composition / Composizione	100% PES		75% PVC + 25% Fiberglass	
Peso / Poids / Weight / Peso	325 g/m ² - 9,6 oz/yd ²		407 g/m ² - 12 oz/yd ²	
Espesor / Épaisseur Thickness / Spessore	0,44 mm - 0,017"		0,38 mm (0,013")	
Ancho de rollo / Largeur rouleau Roll width / Larghezza del tessuto	240 cm - 94"		183 cm - 72" Custard + Dark Grey 250 cm - 98"	
Grado de apertura Coefficient d'ouverture Openess Factor Grado di apertura (%)	100% Opac		Aprox. 0%	
Resistencia al fuego / Classement feu Fire classification / Resistenza al fuoco	NF P 92 503 DIN 4102-1 UNI 8456 - UNI 9174 NFPA 701	M1 B1 Classe 1 Pass	NF P 92 503 13773	M1 Class 1
Resistencia al desgarro Résistance à la déchirure Tear resistance Resistenza alla trazione (daN)	-	-	ISO 4674	1,3 Kg (45,85oz) 0,9 Kg (31,74 oz)
Resistencia a la ruptura / Résistance rupture / Tensile strength / Resistenza alla rottura (daN/5cm)	ISO 13934-1	80 daN - 45 daN	-	-
Resistencia a la luz Résistance à la lumière Light Fastness Resistenza alla luce (Blue Scale)	DIN ISO 105-B02	≥ 5-6 Depending on colour	-	-

EN 410

EN1405

Ref.	Colors	Light Performance (380-780 nm)			Solar Performance (300-2500 nm)			G-value	Double glazing g window=0,75 U window=3,0		Thermocoated double glazing g window=0,75 U window=1,6	
		T%	R%	A%	T%	R%	A%		GTOT	FC-VALUE	GTOT	GLASS
		67005	Black	0	6	94	0		6	94	0,24	0,65
67004	Dark Grey	0	19	81	0	17	83	0,22	0,60	0,80	0,59	0,84
67003	Grey	0	56	44	0	49	51	0,13	0,44	0,59	0,44	0,63
67001	Ivory	0	80	20	0	70	30	0,08	0,34	0,45	0,35	0,49
67002	Stone	0	50	50	0	44	56	0,14	0,46	0,62	0,46	0,66
67000	White	0	80	20	0	67	33	0,08	0,35	0,47	0,36	0,51

SOLAR AND OPTICAL PROPERTIES

Ref.	Colors	SOLAR PROPERTIES			OPTICAL PROPERTIES		
		% Ts	% Rs	% As	% Tv	% Rv	% Av
		40007F	Alabaster	0	60	40	0
40006F	Black	0	5	95	0	7	93
40001F	Custard	0	59	41	0	70	30
40005F	Dark Grey	0	18	82	0	26	74
40004F	Light Grey	0	22	78	0	31	69
40003F	White	0	56	44	0	76	24

The technical data above are average values with a +/- 5% tolerance. The values quoted above represent results of standards and internal tests performed and are provided for information only to enable to make the best use of our products. To ensure warranty effectiveness, refer to warranty certificate concerned available on demand. Our products are subjects to technical evolutions, we remain entitled to modify the characteristics of our products at any time. The buyer of our products is responsible for checking the validity of the above data.